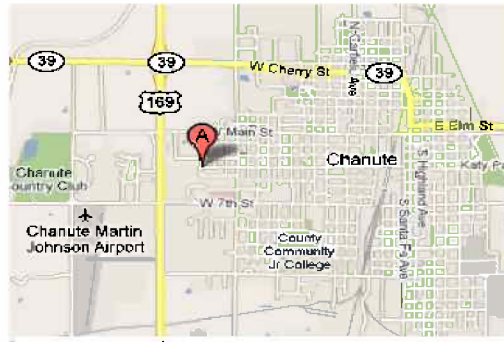




Comfortable, quiet living awaits you at Cornerstone Apartments, where contemporary architectural detailing is complemented by naturally landscaped terrain, accented with native trees and shrubs. Convenience features such as private entries, dishwashers, individual laundry facilities and garages await you and your family. You will be pleasantly surprised by our affordable rental rates made possible through special considerations to those individuals and family's that may earn less than the median area income. Cornerstone combines a peaceful country-like atmosphere with the convenience of city living. For the quality lifestyle you've been searching for, look no further than Cornerstone Apartment Homes.

**1520 W. 4th St. #20  
Chanute, KS 66720  
Phone 620-431-1838  
Fax 620-431-1823**



[www.Beacon-Mgmt.com](http://www.Beacon-Mgmt.com)



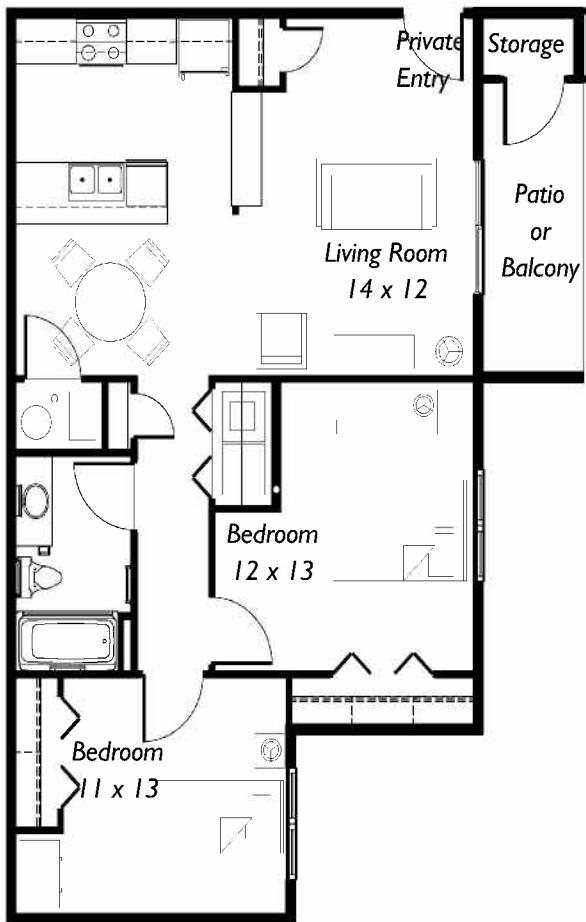
## **Cornerstone Apartment Homes**

**1520 W. 4th St. #20  
Chanute, KS 66720  
Phone 620-431-1838  
Fax 620-431-1823**



**Now Leasing BRAND NEW  
Two and Three Bedroom  
Apartment Homes**

**Two Bedroom  
One Bath  
885 Sq. Ft.**



Rent: \$ \_\_\_\_\_

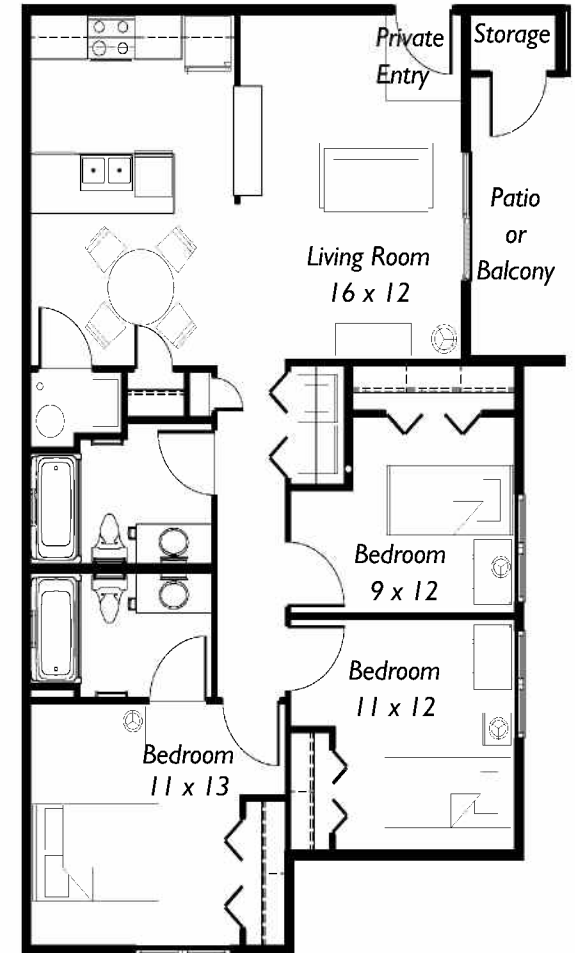
Deposit: **\$200**



**Cornerstone**

- ✓ Fully equipped kitchens with dishwashers and disposals
- ✓ Self cleaning ovens
- ✓ Custom fit window blinds provided
- ✓ Exterior balcony with storage
- ✓ Private entry, no common hallways
- ✓ Large dining areas & Breakfast bar
- ✓ All electric utilities
- ✓ Individual hot water heating, furnaces and central air
- ✓ Full size washer and dryer in every home
- ✓ Off-street parking, garages available
- ✓ Small pets welcome \*See manager for details
- ✓ Walking distance to schools
- ✓ Children's play area
- ✓ On-site manager and 24 hour emergency maintenance

**Three Bedroom  
Two Bath  
1,109 Sq. Ft.**



Rent: \$ \_\_\_\_\_

Deposit: **\$250**



Room size and sq. footage is approximate and may vary in some floor plans